



REGIONAL SPECIALISED METEOROLOGICAL CENTRE -TROPICAL CYCLONES, NEW DELHI TROPICAL WEATHER OUTLOOK

DEMS-RSMC TROPICAL CYCLONES NEW DELHI DATED 20.07.2025

TROPICAL WEATHER OUTLOOK FOR THE NORTH INDIAN OCEAN (THE BAY OF BENGAL OF BENGAL AND THE ARABIAN SEA) VALID FOR THE NEXT 168 HOURS ISSUED AT 0600 UTC OF 20.07.2025 BASED ON 0300 UTC OF 20.07.2025.

LAND:

Depression over northwest & adjoining areas of northeast Rajasthan

Yesterday's depression over northwest & adjoining areas of northeast Rajasthan moved west-northwestwards and weakened into a **well-marked low-pressure area** over west Rajasthan & adjoining Pakistan at 0000 UTC and persisted over the same region at 0300 UTC of today, the 20th July, 2025. The associated cyclonic circulation extended upto 4.5 km above mean sea level tilting southwestwards with height. It is likely to continue to move nearly westwards and weaken gradually into a low-pressure area during next 12 hours

As per INSAT 3D Imagery, scattered to broken low and medium clouds with embedded moderate to intense convection lay over south Pakistan (minimum Cloud Top Temperature -60°C to -70°C) and isolated weak to moderate convection lay over Rajasthan.

BAY OF BENGAL:

A fresh upper air cyclonic circulation formed over westcentral & adjoining northwest Bay of Bengal off south Odisha, north Coastal Andhra Pradesh & Yanam at 3.1 km above mean sea level at 0300 UTC of today, the 20th July, 2025. .

A fresh **Low Pressure area** is likely to form over north Bay of Bengal around 24th July, 2025.

Scattered to broken low and medium clouds with embedded intense to very intense convection lay over south & adjoining central Bay of Bengal and Andaman Sea. Scattered low and medium clouds with embedded moderate to intense convection lay over the rest of the Bay of Bengal.

*PROBABILITY OF CYCLOGENESIS (FORMATION OF DEPRESSION) DURING NEXT 168 HRS:

24 HOURS	24-48 HOURS	48-72 HOURS	72-96 HOURS	96-120 HOURS	120-144 HOURS	144-168 HOURS
NIL	NIL	NIL	NIL	NIL	NIL	NIL

***NOTE: EVERY 24HR FORECAST IS VALID UPTO 0300 UTC (0830 IST) OF NEXT DAY**

ARABIAN SEA:

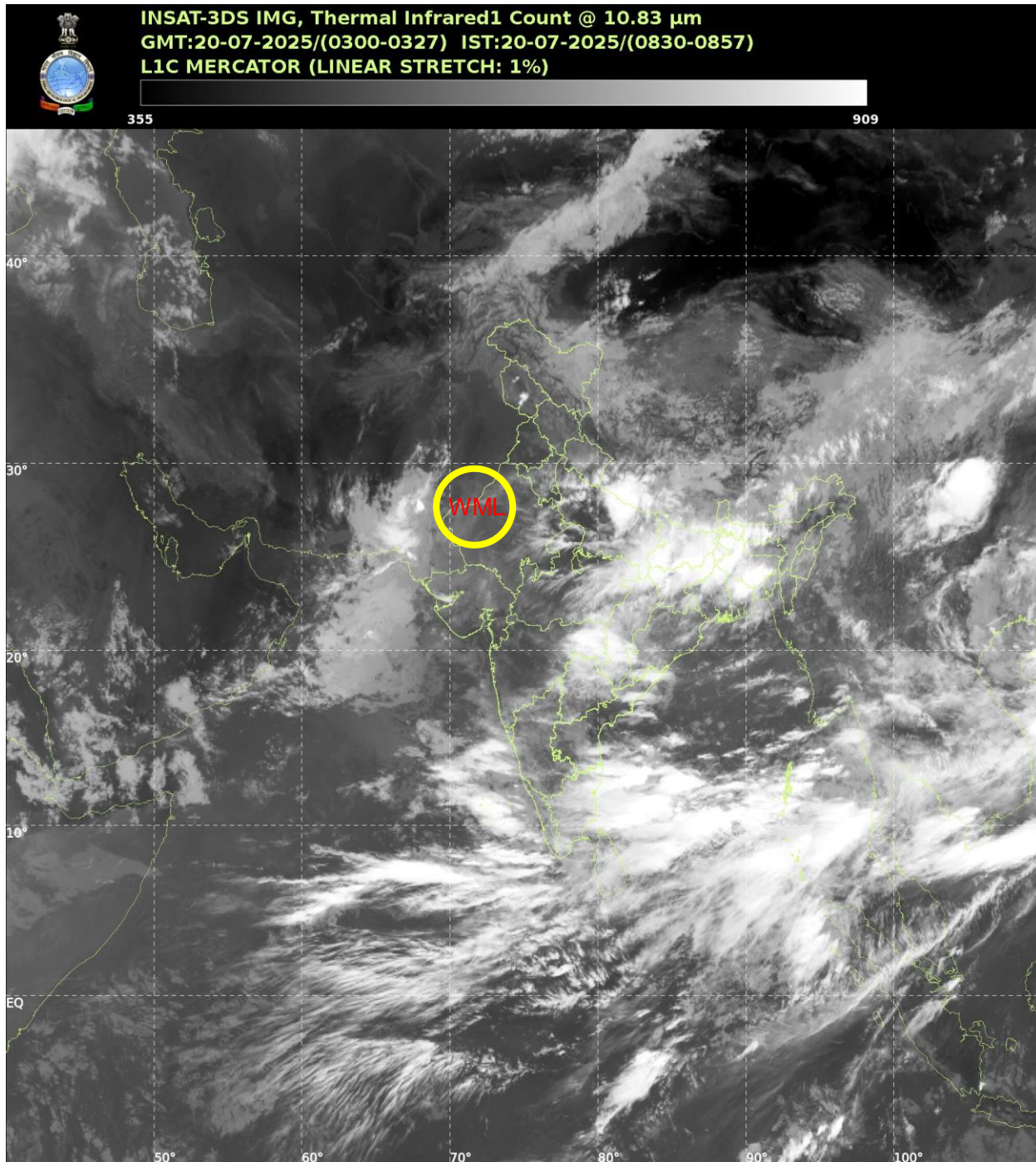
Scattered to broken low and medium clouds with embedded intense to very intense convection lay over southeast & adjoining eastcentral Arabian Sea, Lakshadweep Islands area, Maldives & Comorin area. Scattered low and medium clouds with embedded moderate to intense convection lay over north Arabian Sea and weak to moderate convection lay over the rest of the Arabian Sea & Gulf of Kutch.

***PROBABILITY OF CYCLOGENESIS (FORMATION OF DEPRESSION) DURING NEXT 168 HRS:**

24 HOURS	24-48 HOURS	48-72 HOURS	72-96 HOURS	96-120 HOURS	120-144 HOURS	144-168 HOURS
NIL	NIL	NIL	NIL	NIL	NIL	NIL

***NOTE: EVERY 24HR FORECAST IS VALID UPTO 0300 UTC (0830 IST) OF NEXT DAY**

REMARKS: NIL



WML: Well marked low pressure area